

# Smooth Sailing

*Instructions:* Imagine your school is a sailboat. Use that analogy to think of strengths, advantages, challenges and threats specifically related to improving the learning outcomes identified in the Schools2030 initiative (see the first page of this section for reference).

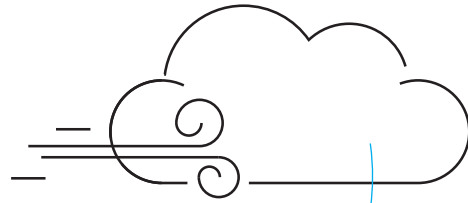
SMOOTH SAILING

QUANTITATIVE DATA ANALYSIS

IDENTIFY A PROBLEM TO EXPLORE

SECONDARY RESEARCH

STAKEHOLDER MAPPING



## 1 ADVANTAGES: CONDITIONS THAT HELP YOUR CAUSE

*Example: Most students come to school every day.*

## 2 STRENGTHS: ASSETS OF YOUR SCHOOL

*Example: Teachers are dedicated.*

## 4 OBVIOUS THREATS: CONDITIONS THAT HURT YOUR CAUSE

*Example: Students don't come to school when the weather is cold.*

## 3 CHALLENGES: DEFICITS OF YOUR SCHOOL

*Example: Students do not have access to computers at school.*

## 5 NON OBVIOUS THREATS: CONDITIONS THAT HURT YOUR CAUSE

*Example: Teachers might leave their job at the school.*

