



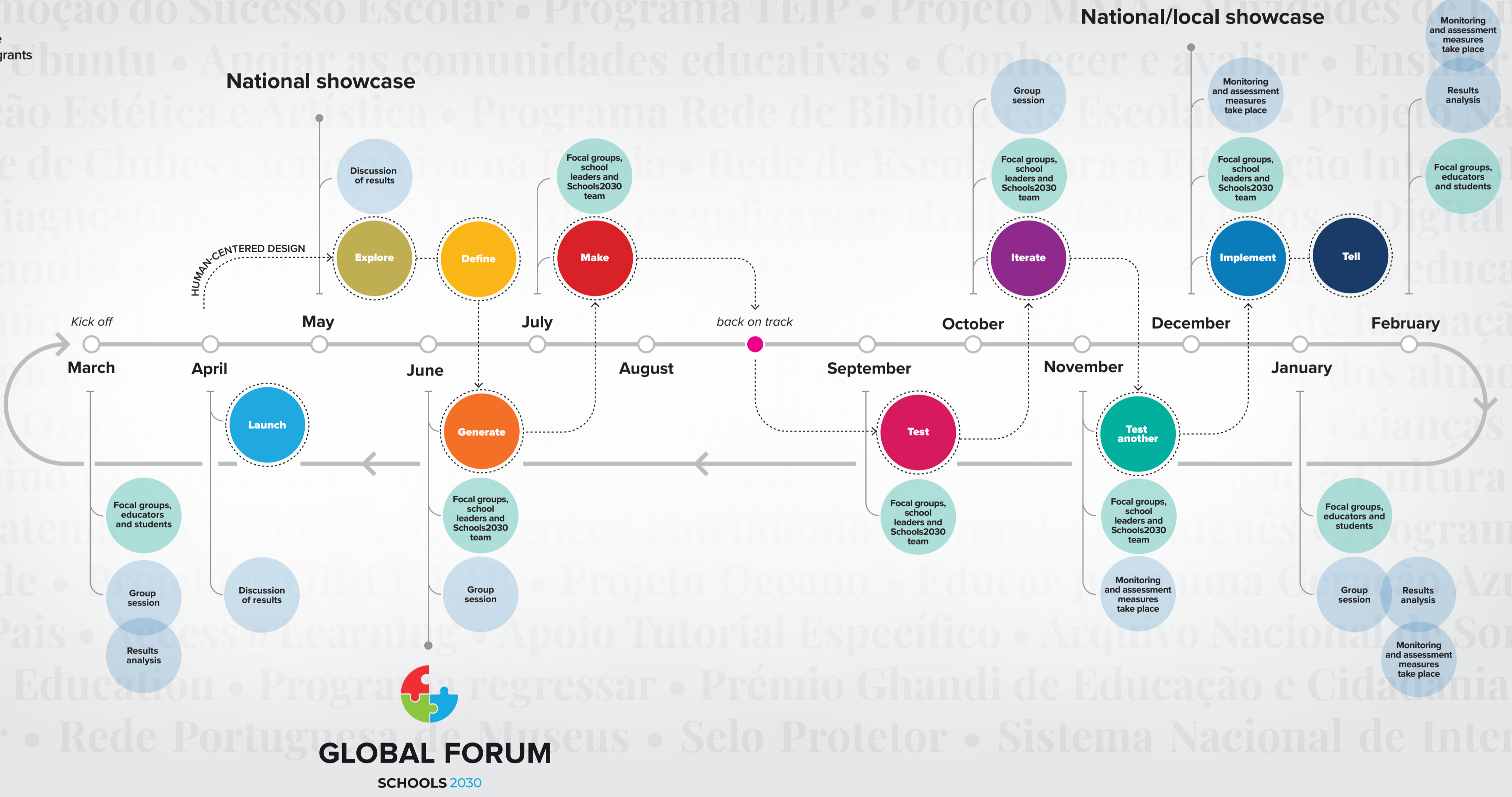
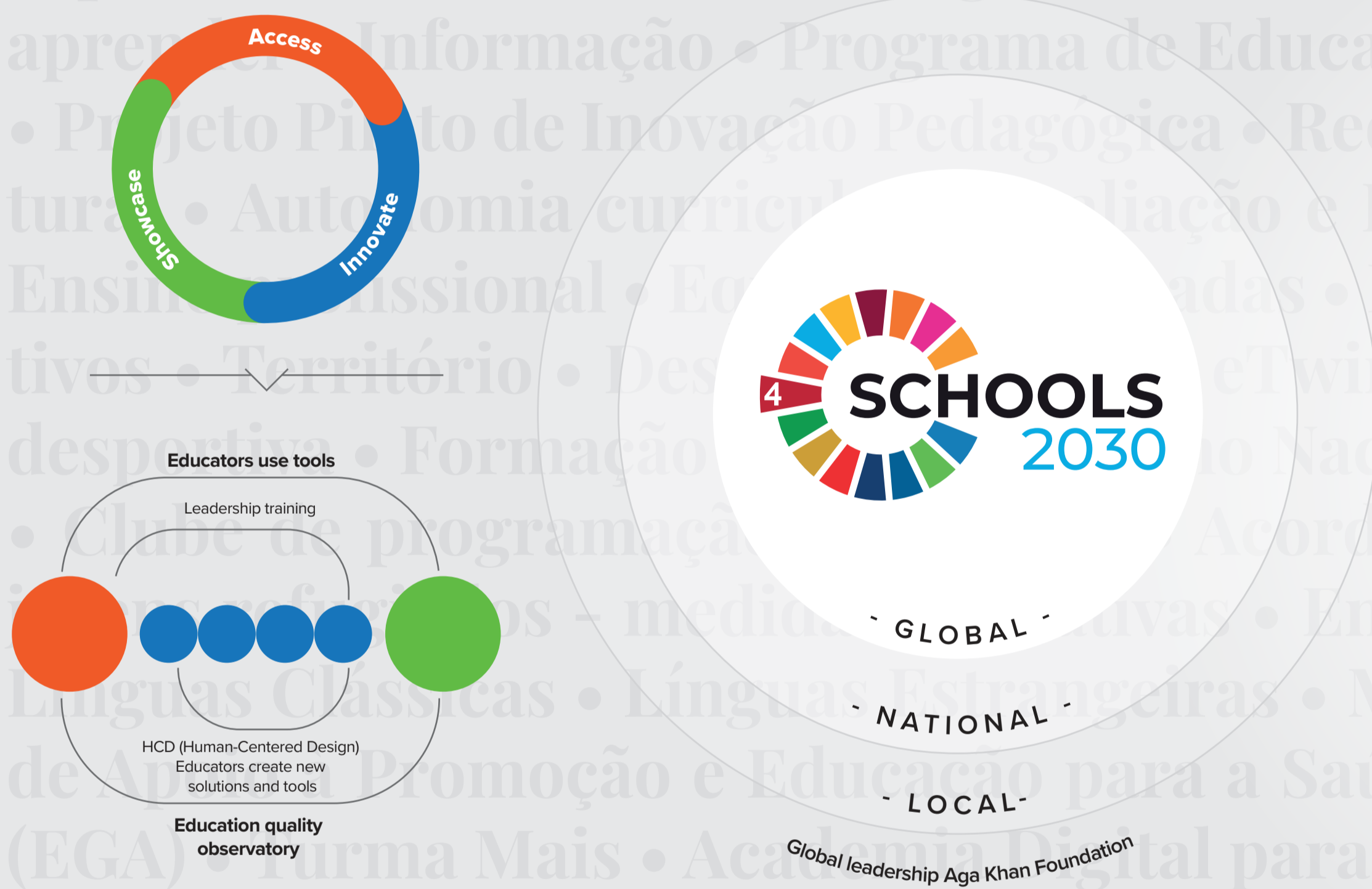
Ensure inclusive and equitable quality education and promote lifelong learning opportunities for all.

Disadvantaged children and young people are equipped with the knowledge, skills, attitudes and values they need to thrive and to be contributing members of society.

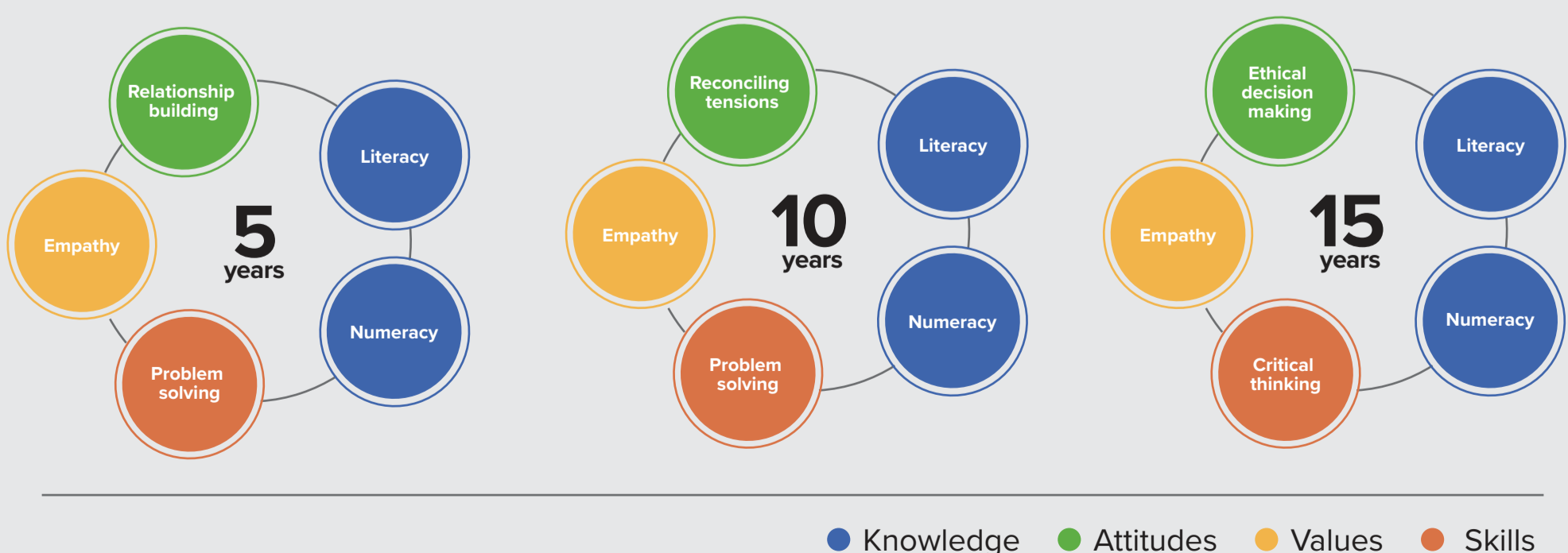
Educators and schools-level stakeholders are recognized as experts and leaders in education innovation and are actively engaged in education sector dialogue and planning.



- GLOBAL LEADERSHIP:**
 - Global programme secretariat
 - Global steering committee
 - Global technical partners
- NATIONAL LEADERSHIP:**
 - National advisory committee
 - Scientific partners
 - School leaders
 - Policy makers
- SCHOOL LEADERSHIP:**
 - 100 schools pre/primary/secondary-schools
 - Skills development
 - Management of flexible response funds micro-grants



Assessment of holistic learning and quality of learning environments



<p>Enhanced capacity of educators to measure, design, and implement innovations in education to improve holistic learning outcomes.</p> <p>Co-develop and co-test new holistic learning assessment resources with and for educators.</p>	<p>Improved learning outcomes and quality teaching and learning environments in challenging contexts.</p> <p>Co-develop and co-test new school-based HCD tools and resources with and for educators.</p>	<p>Increased capacity and opportunities for educators to engage in education sector dialogue.</p> <p>Conduct school and/or classroom-level professional development training sessions on holistic learning assessment and HCD approaches.</p>	<p>Generated policy-relevant evidence about school-led approaches to improving quality education.</p> <p>Provide flexible response funds and/or support for teachers to design, test, and iterate new school-level innovations to improve teaching and learning outcomes.</p>	<p>Increased capacity and opportunities for educators to engage in education sector dialogue.</p> <p>Showcase teacher-led innovations and Schools2030 global resources through virtual and in-person platforms and communities of practice.</p>	<p>Generated policy-relevant evidence about school-led approaches to improving quality education.</p> <p>Generate evidence about scalable approaches to improving teaching and learning outcomes.</p>	<p>Generated policy-relevant evidence about school-led approaches to improving quality education.</p> <p>Engage local, national, and global-level education system stakeholders about school-led approaches to inform and influence sector dialogue.</p>
---	---	--	--	--	--	---