



Ensure inclusive and equitable quality education and promote lifelong learning opportunities for all.

4 QUALITY EDUCATION

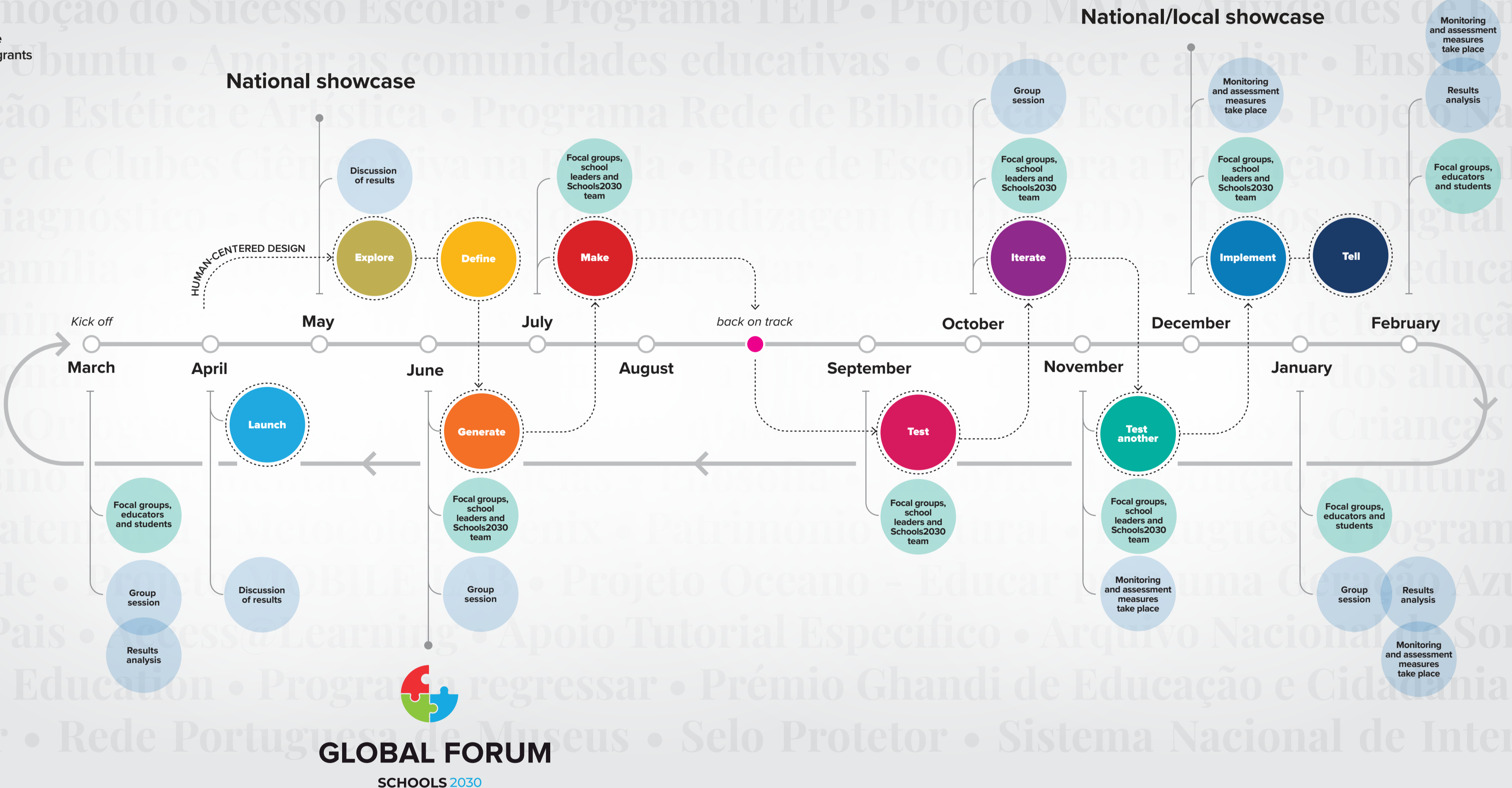
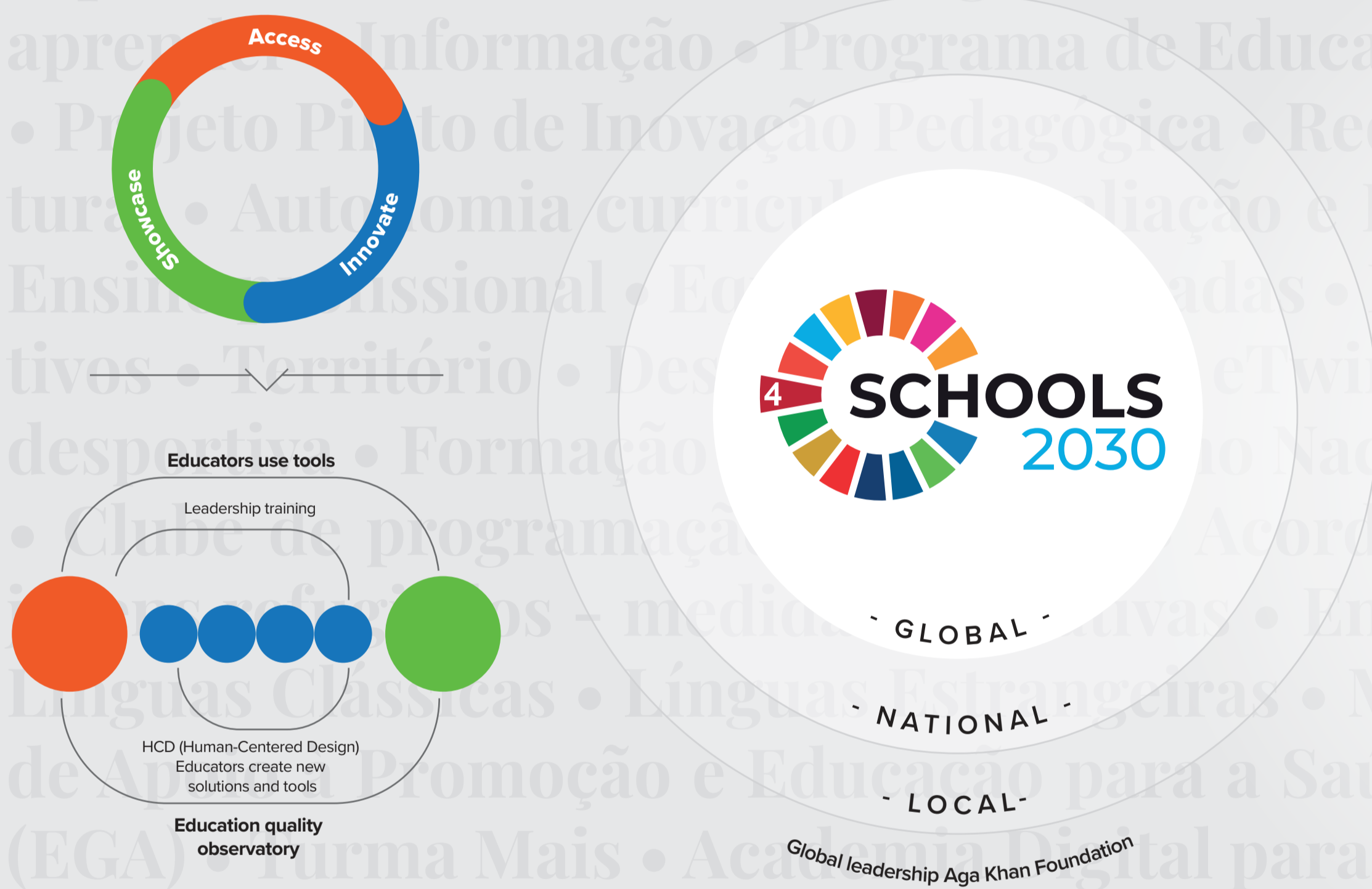


Disadvantaged children and young people are equipped with the knowledge, skills, attitudes and values they need to thrive and to be contributing members of society.

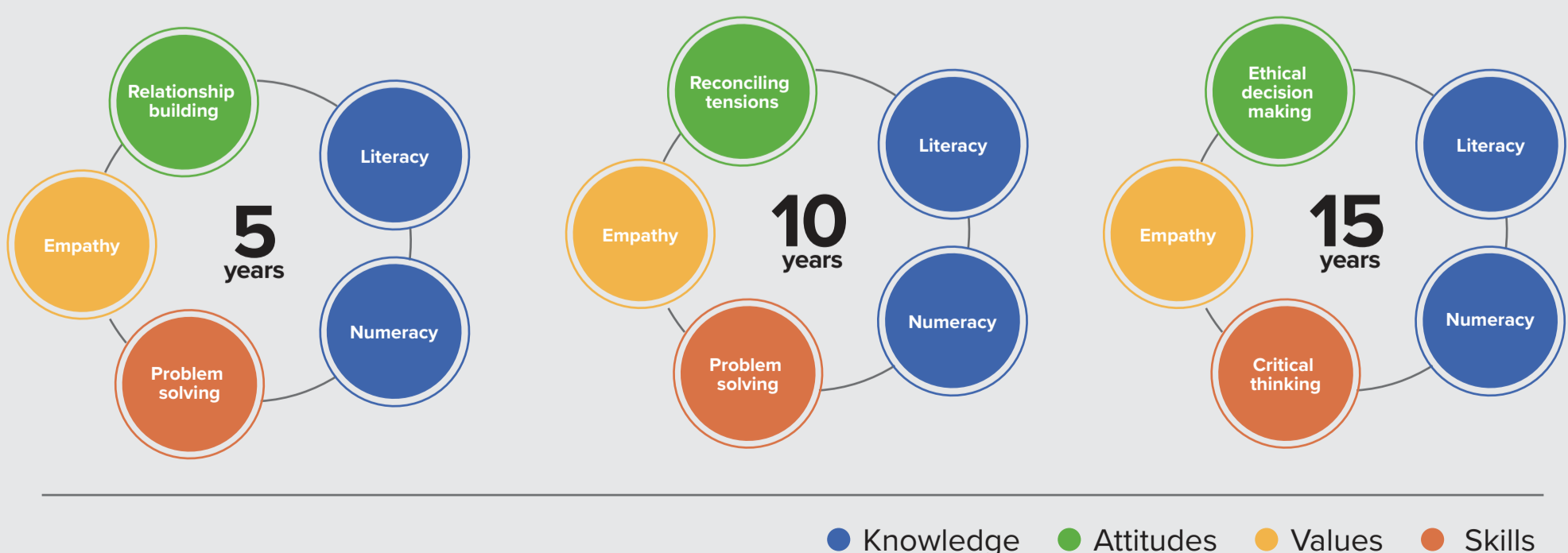
Educators and schools-level stakeholders are recognized as experts and leaders in education innovation and are actively engaged in education sector dialogue and planning.



- GLOBAL LEADERSHIP:**
  - Global programme secretariat
  - Global steering committee
  - Global technical partners
- NATIONAL LEADERSHIP:**
  - National advisory committee
  - Scientific partners
  - School leaders
  - Policy makers
- SCHOOL LEADERSHIP:**
  - 100 schools pre/primary/secondary-schools
  - Skills development
  - Management of flexible response funds micro-grants



**Assessment of holistic learning and quality of learning environments**



<p><b>Enhanced capacity of educators to measure, design, and implement innovations in education to improve holistic learning outcomes.</b></p> <p>Co-develop and co-test new holistic learning assessment resources with and for educators.</p>	<p><b>Improved learning outcomes and quality teaching and learning environments in challenging contexts.</b></p> <p>Co-develop and co-test new school-based HCD tools and resources with and for educators.</p>	<p><b>Increased capacity and opportunities for educators to engage in education sector dialogue.</b></p> <p>Conduct school and/or classroom-level professional development training sessions on holistic learning assessment and HCD approaches.</p>	<p><b>Generated policy-relevant evidence about school-led approaches to improving quality education.</b></p> <p>Provide flexible response funds and/or support for teachers to design, test, and iterate new school-level innovations to improve teaching and learning outcomes.</p>	<p><b>Increased capacity and opportunities for educators to engage in education sector dialogue.</b></p> <p>Showcase teacher-led innovations and Schools2030 global resources through virtual and in-person platforms and communities of practice.</p>	<p><b>Generated policy-relevant evidence about school-led approaches to improving quality education.</b></p> <p>Generate evidence about scalable approaches to improving teaching and learning outcomes.</p>	<p><b>Generated policy-relevant evidence about school-led approaches to improving quality education.</b></p> <p>Engage local, national, and global-level education system stakeholders about school-led approaches to inform and influence sector dialogue.</p>
---	---	--	--	--	--	---