



Ensure inclusive and equitable quality education and promote lifelong learning opportunities for all.

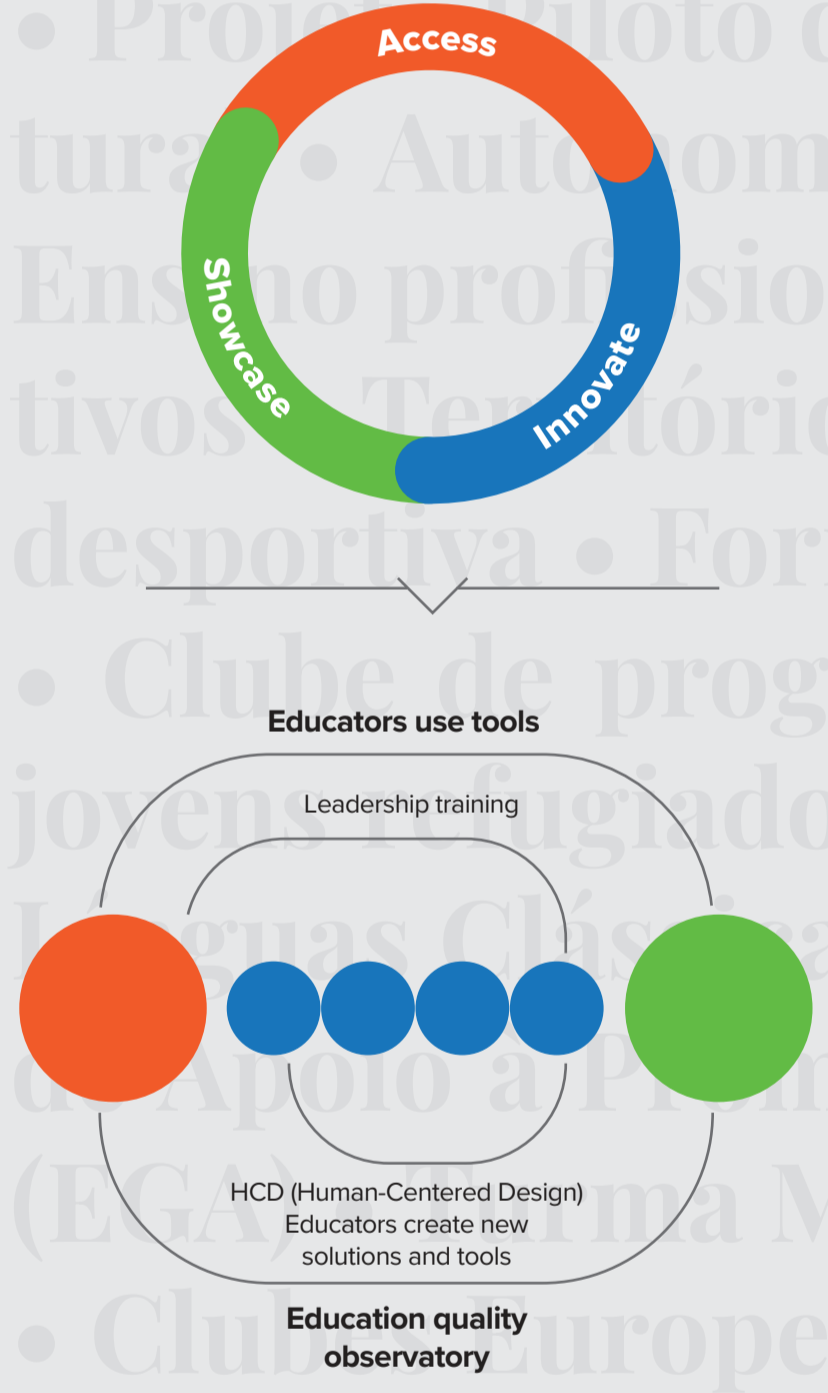
Disadvantaged children and young people are equipped with the knowledge, skills, attitudes and values they need to thrive and to be contributing members of society.

Educators and schools-level stakeholders are recognized as experts and leaders in education innovation and are actively engaged in education sector dialogue and planning.



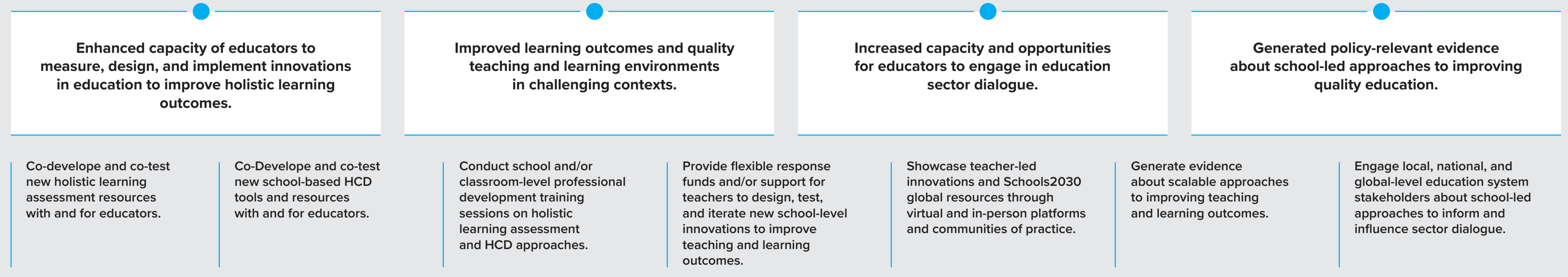
# CURRICULUM PEDAGOGICAL MATRIX Schools2030

## Assessment of holistic learning and quality of learning environments



DL n.º 54/2018 de 6 de julho; DL n.º 55/2018 de 6 de julho;  
**DQP** (Manual Desenvolvendo a Qualidade em Parceria);  
**OCEPE** (Orientações Curriculares Educação Pré Escolar);  
**PASEO** (Perfil dos Alunos à Saída da Escolaridade Obrigatória);  
**PNPSE** (Plano Nacional Promoção Sucesso Escolar);  
**ENEC** - Estratégia Nacional de Educação para a Cidadania;  
**AE** - Aprendizagens Essenciais;

**PLNM** - Português Língua Não Materna;  
**PNL2027** - Plano Nacional de Leitura 2027;  
**PIPL** - Programa Integrado de Promoção da Literacia;  
**BEQI** - Brief Early Childhood Quality Inventory;  
**IDELA** - International Development and Early Learning Assessment;  
**CLEO - TRT** - Classroom Learning Environment Observation and Teacher Reflection Toolkit



This document was prepared in the context of the Portuguese educational system and the Schools2030 program, in the 2022/2023 school year, and is subject to changes that may arise.